

**Dairy Farmers of New Brunswick  
Milk Matters: Production and Payment Summary Report for July 2022**

**Quota Exchange for August, 2022**

	Price in Dollars	# of Sellers	Kgs Offered By Sellers	Total Cum. kgs	Difference Between Sellers/Buyers	Total Cum. kgs	Kgs Wanted By Buyers	# of Buyers
QESP	\$24,000.00		.0	.0	524.9	524.9	524.9	
<b>TOTALS</b>		<b>0</b>	<b>.0</b>				<b>524.9</b>	<b>28</b>

QESP = Quota Exchange Selling Price

QESP = Le prix de vente de quota

.0 of 524.9 kgs wanted at or above the Quota Exchange Selling Price of \$24,000.00 were purchased.

.0 des 524.9 kilos demandé au prix de vente de \$24,000.00 ou au dessus ont été acheté. Il y avait un total de .0 kgs proposés à la vente et le total des offres pour l'achat de 524.9kg.

There was a total of .0 kgs offered for sale and total bids to purchase of 524.9 kgs.

**Next Exchange closes at 4:00 p.m., Thursday September 1, 2022**

**Results are available Tuesday September 6, 2022**

Month	Aug	Jul	Jun	May	Apr	Mar	6 month avg.
Clearing Price	\$0	\$0	\$24,000	\$24,000	\$0	\$0	\$24,000
Kgs on Exchange	.0	.0	5.4	3.0	.0	.0	4.2
Kgs by Transfer	.0	96.6	259.0	77.3	79.7	.0	85.4

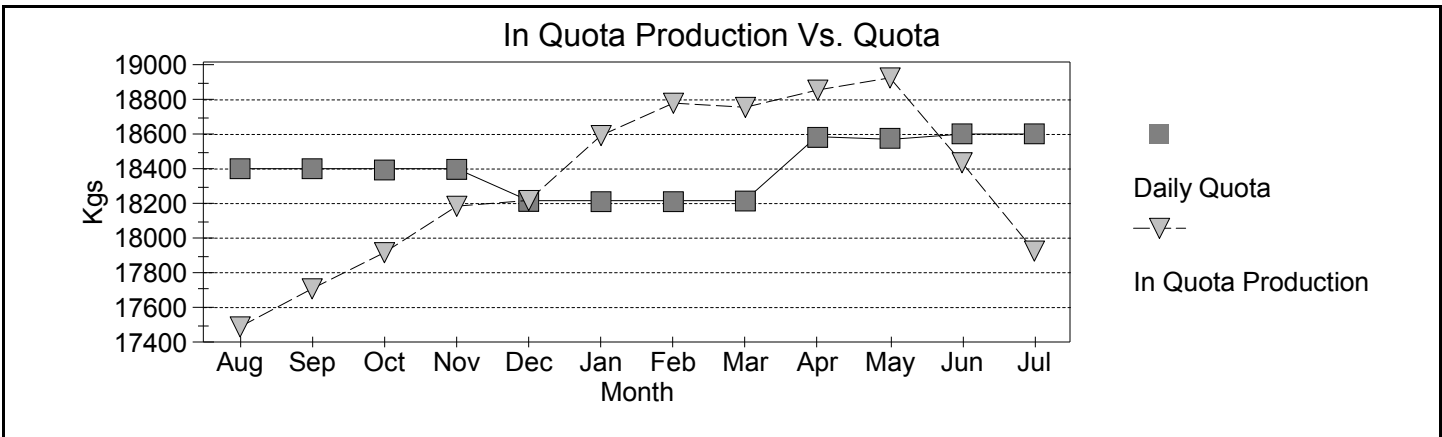
**NB Domestic Milk Pool**

Over Quota	BF Kg	BF \$/kg	BF \$	PT Kg	PT \$/kg	PT \$	OS Kg	OS \$/kg	OS \$
July 2022	545	-\$2.7327	(\$1,490)	424	-\$1.9107	(\$811)	731	-\$.3917	(\$286)
12 Months	3,607	-\$2.7325	(\$9,857)	2,750	-\$1.9106	(\$5,255)	4,816	-\$.3917	(\$1,886)
<b>SNF &gt;2.3</b>									
July 2022				1,541	\$0.0000	\$0	2,916	\$0.0000	\$0
12 Months				6,784	\$0.0000	\$0	12,721	\$0.0000	\$0
<b>SNF 2.0&lt;=2.3</b>									
July 2022				37,897	\$4.2127	\$159,648	70,121	\$4.2127	\$295,398
12 Months				354,008	\$3.6334	\$1,286,253	641,122	\$3.6356	\$2,330,871
<b>Domestic Market</b>									
July 2022	555,082	\$13.2368	\$7,347,503	391,766	\$10.5926	\$4,149,825	716,626	\$9.9000	\$644,963
12 Months	6,677,246	\$11.9773	\$79,975,213	4,781,163	\$9.9918	\$47,772,626	8,515,286	\$9.9000	\$7,663,758

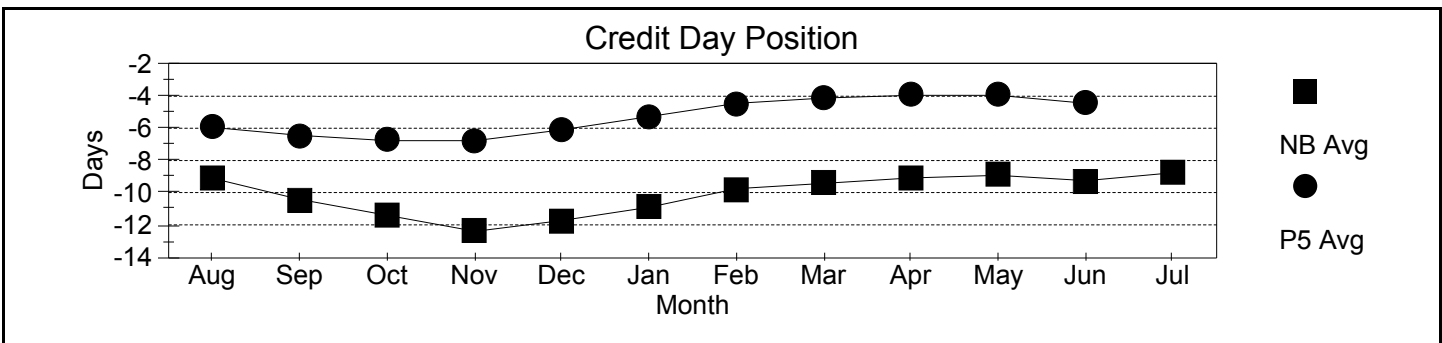
## Production & Payment

Revenue	\$/HL	BF \$	PT \$	OS \$				Total Paid \$
July 2022	\$92.46	\$7,346,012	\$4,308,662	\$940,075				\$12,594,749
12 Months	\$88.14	\$79,965,357	\$49,053,625	\$9,992,743				\$139,011,724
Deductions	Transport	Promotion	Admin	Lab Fee	Research Levy	Total Ded Per HL		Total Deductions
	Per HL	Per Kg of Total Solids						
July 2022	\$3.60	\$.1139	\$.0570	\$.0100	\$.0016	\$5.98		\$815,349
12 Months	\$3.09	\$.1139	\$.0570	\$.0100	\$.0016	\$5.49		\$8,702,132
Quality	Somatic Cell Count	Standard Plate Count	Lab Past. Count					Rejected Loads
July 2022	187,425	7,566	229					0
12 Months	170,152	7,242	169					0
Production & Component Tests	Production Volume	Butter Fat	Protein	Lactose & O.S.	Total solids	SNF Ratio		
July 2022	13,636,871	4.0744	3.1652	5.7960	13.0356	2.1994		
12 Months	157,813,595	4.2334	3.2600	5.8132	13.3065	2.1432		

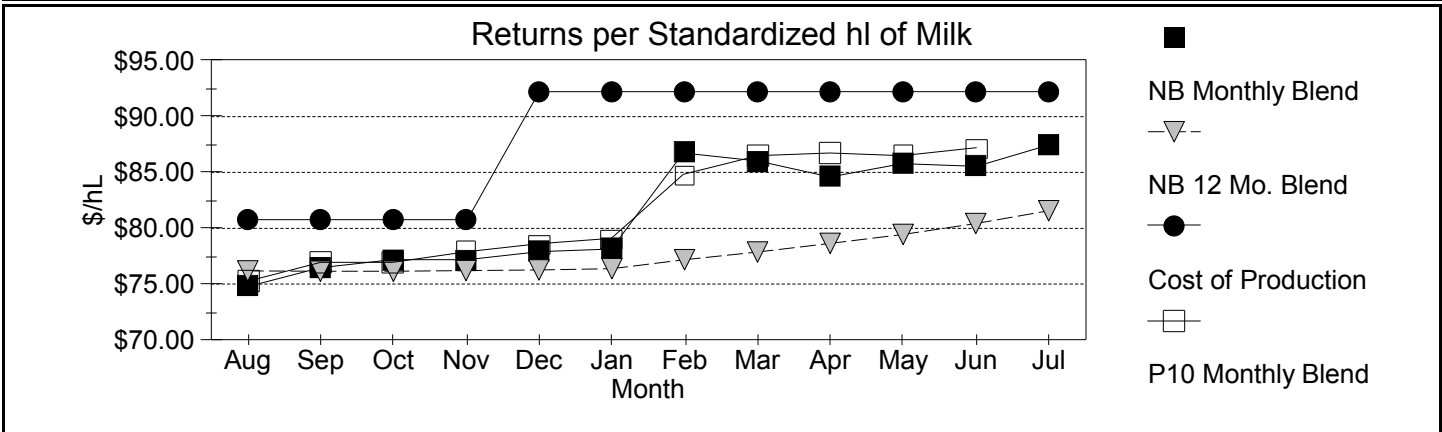
**Milk Matters: Production and Payment Summary Report for July 2022**



**Credits**



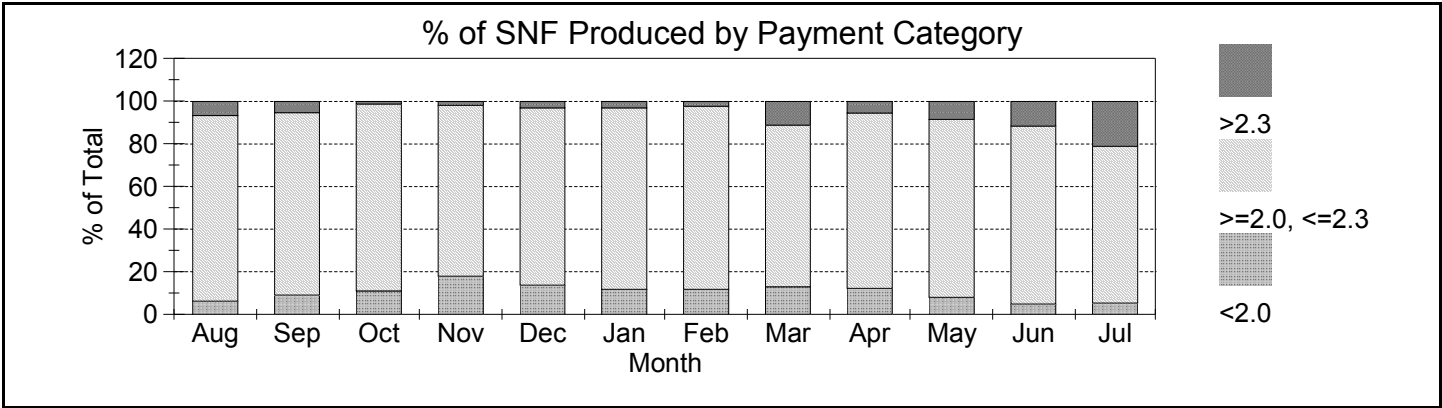
Month	Aug	Sep	Oct	Nov	Dec	Jan	Feb	Mar	Apr	May	Jun	Jul
Incentive Days Issued	1.00	2.00	1.00	2.00	0.00	0.02	0.06	1.06	1.06	1.06	1.06	0.07
Incentive Days Used	0.32	0.60	0.44	0.93	0.00	0.01	0.05	0.72	0.64	0.65	0.55	0.05
Days Over Quota	0.02	0.00	0.05	0.01	0.00	0.00	0.04	0.01	0.01	0.02	0.00	0.03
Days Lost	-0.28	-0.29	-0.36	-0.39	-0.31	-0.14	-0.07	-0.07	-0.10	-0.14	-0.10	-1.54
Days Exchanged	0.80	1.04	0.90	1.14	0.77	0.93	0.94	1.25	1.11	0.96	1.15	0.96
Credit Exch Clearing Price	\$5.01	\$4.75	\$3.99	\$4.00	\$3.75	\$5.43	\$7.78	\$7.78	\$5.00	\$3.00	\$3.11	\$2.50



Month	Aug	Sep	Oct	Nov	Dec	Jan	Feb	Mar	Apr	May	Jun	Jul
SNF 2.00-2.30 \$/kg	\$2.60	\$2.81	\$2.81	\$3.17	\$3.44	\$3.66	\$3.92	\$4.09	\$4.18	\$4.20	\$4.21	\$4.21

A standardized hl of milk contains 3.60 kg/hl BF, 3.23 kg/hl PT and 5.69 kg/hl LOS

# SNF Policy



# SNF/BF: Avg Ratios

Month	Aug	Sep	Oct	Nov	Dec	Jan	Feb	Mar	Apr	May	Jun	Jul
< 2	1.93	1.92	1.91	1.92	1.91	1.91	1.92	1.92	1.93	1.92	1.91	1.93
2 < > 2.3	2.17	2.17	2.14	2.14	2.14	2.14	2.15	2.15	2.16	2.16	2.17	2.18
> 2.3	2.36	2.36	2.34	2.31	2.33	2.33	2.31	2.33	2.36	2.34	2.36	2.34
Provincial	2.17	2.15	2.12	2.10	2.12	2.12	2.12	2.14	2.14	2.16	2.18	2.20