

**Dairy Farmers of New Brunswick  
Milk Matters: Production and Payment Summary Report for November 2021**

**Quota Exchange for December, 2021**

Price in Dollars	# of Sellers	Kgs Offered By Sellers	Total Cum. kgs	Difference Between Sellers/Buyers	Total Cum. kgs	Kgs Wanted By Buyers	# of Buyers
\$20,000.00		.0	.0	732.3	732.3	1.0	
QESP \$24,000.00		25.5	25.5	705.8	731.3	731.3	
<b>TOTALS</b>	<b>2</b>	<b>25.5</b>				<b>732.3</b>	<b>30</b>

QESP = Quota Exchange Selling Price

QESP = Le prix de vente de quota

25.5 of 731.3 kgs wanted at or above the Quota Exchange Selling Price of \$24,000.00 were purchased.

25.5 des 731.3 kilos demandé au prix de vente de \$24,000.00 ou au dessus ont été acheté.

There was a total of 25.5 kgs offered for sale and total bids to purchase of 732.3 kgs.

Il y avait un total de 25.5 kgs proposés à la vente et le total des offres pour l'achat de 732.3kg.

**Next Exchange closes at 4:00 p.m., Tuesday January 4, 2022**

**Results are available Thursday April 7, 2022**

Month	Dec	Nov	Oct	Sept	Aug	Jul	6 month avg.
Clearing Price	\$24,000	\$24,000	\$24,000	\$24,000	\$24,000	\$24,000	\$24,000
Kgs on Exchange	25.5	3.0	53.1	8.5	33.0	4.0	21.2
Kgs by Transfer	.0	12.4	.0	.0	.0	.0	2.1

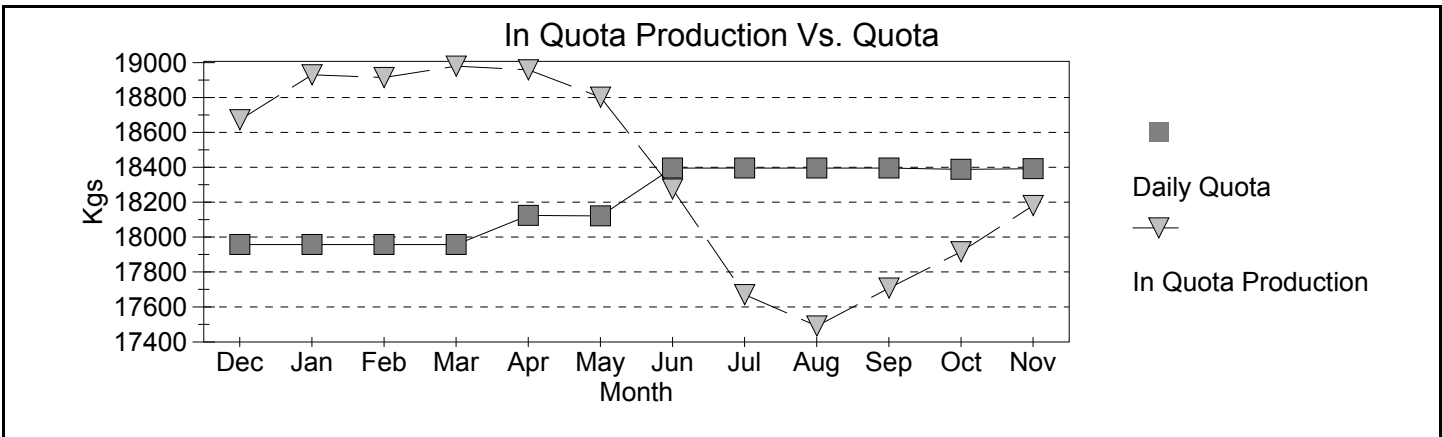
**NB Domestic Milk Pool**

Over Quota	BF Kg	BF \$/kg	BF \$	PT Kg	PT \$/kg	PT \$	OS Kg	OS \$/kg	OS \$
November 2021	102	-\$2.7327	(\$280)	79	-\$1.9107	(\$151)	143	-\$3.917	(\$56)
12 Months	7,899	-\$5.013	(\$3,960)	6,161	-\$3.563	(\$2,195)	10,842	-\$0.732	(\$794)
<b>SNF &gt;2.3</b>									
November 2021				37	\$0.0000	\$0	66	\$0.0000	\$0
12 Months				6,729	\$0.0000	\$0	12,340	\$0.0000	\$0
<b>SNF 2.0&lt;&gt;2.3</b>									
November 2021				23,502	\$3.1705	\$74,513	41,448	\$3.1705	\$131,410
12 Months				291,731	\$2.5263	\$736,994	531,450	\$2.5243	\$1,341,552
<b>Domestic Market</b>									
November 2021	545,242	\$10.9441	\$5,967,180	395,711	\$9.6465	\$3,817,223	686,573	\$9.000	\$617,915
12 Months	6,696,235	\$10.8653	\$72,756,752	4,833,922	\$9.6197	\$46,501,064	8,661,415	\$1.0305	\$8,925,159

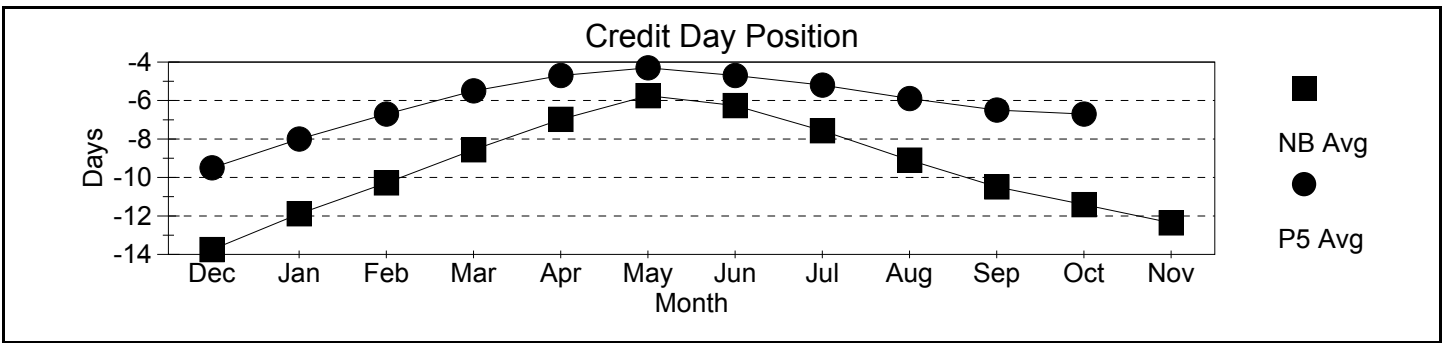
## Production & Payment

Revenue	\$/HL	BF \$	PT \$	OS \$				Total Paid \$
November 2021	\$84.54	\$5,966,900	\$3,891,586	\$749,269				\$10,607,756
12 Months	\$82.51	\$72,782,518	\$47,235,863	\$10,265,917				\$130,284,298
Deductions	Transport	Promotion	Admin	Lab Fee	Research Levy	Total Ded Per HL		Total Deductions
	Per HL	Per Kg of Total Solids						
November 2021	\$2.89	\$.1139	\$.0570	\$.0100	\$0.00	\$5.35		\$671,689
12 Months	\$2.83	\$.1041	\$.0614	\$.0078	\$0.00	\$5.14		\$8,156,233
Quality	Somatic Cell Count	Standard Plate Count	Lab Past. Count					Rejected Loads
November 2021	162,094	5,282	128					0
12 Months	178,941	6,287	156					0
Production & Component Tests	Production Volume	Butter Fat	Protein	Lactose & O.S.	Total solids	SNF Ratio		
November 2021	12,551,351	4.3449	3.3409	5.8020	13.4878	2.1043		
12 Months	158,090,485	4.2407	3.2504	5.8296	13.3207	2.1412		

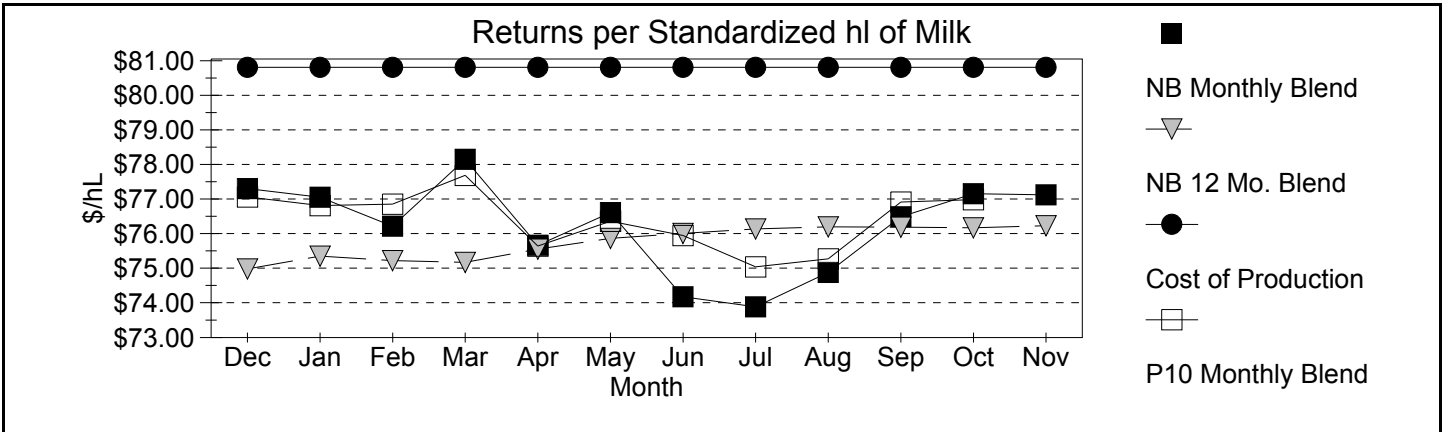
## Milk Matters: Production and Payment Summary Report for November 2021



## Credits



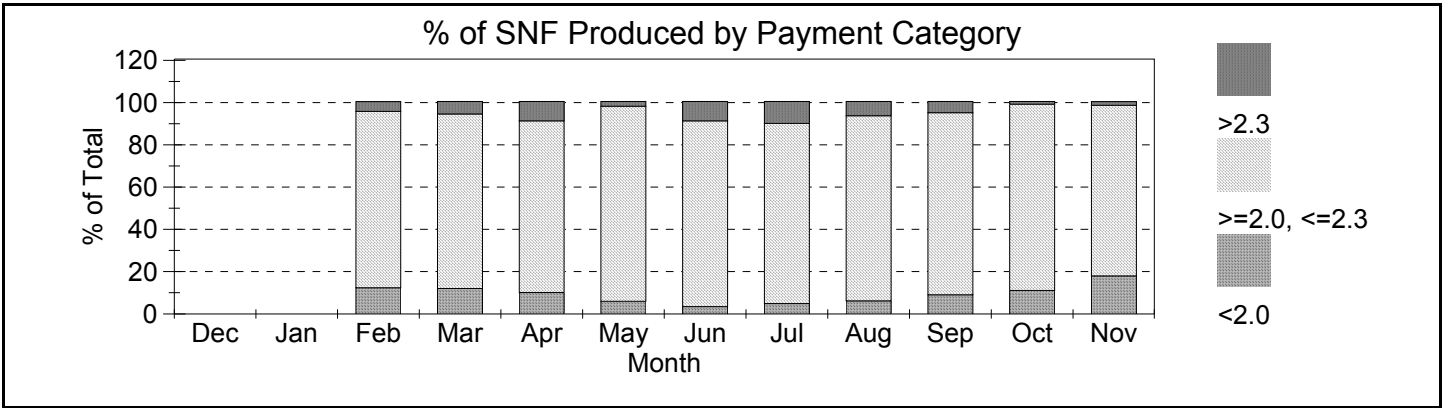
Month	Dec	Jan	Feb	Mar	Apr	May	Jun	Jul	Aug	Sep	Oct	Nov
Incentive Days Issued	1.00	0.00	0.00	0.00	0.00	0.00	1.00	1.00	1.00	2.00	1.00	2.00
Incentive Days Used	0.64	0.00	0.00	0.00	0.00	0.00	0.46	0.33	0.32	0.60	0.44	0.93
Days Over Quota	0.00	0.04	0.09	0.08	0.05	0.04	0.04	0.02	0.02	0.00	0.05	0.01
Days Lost	-0.19	-0.17	-0.15	-0.11	-0.08	-0.04	-0.10	-0.20	-0.28	-0.29	-0.36	-0.39
Days Exchanged	0.95	0.99	0.90	1.02	1.06	0.83	0.53	0.55	0.80	1.04	0.90	1.14
Credit Exch Clearing Price	\$4.01	\$6.04	\$8.58	\$10.00	\$10.00	\$10.00	\$4.55	\$3.01	\$5.01	\$4.75	\$3.99	\$4.00



Month	Dec	Jan	Feb	Mar	Apr	May	Jun	Jul	Aug	Sep	Oct	Nov
SNF 2.00-2.30 \$/kg			\$2.20	\$2.17	\$2.30	\$2.39	\$2.50	\$2.55	\$2.60	\$2.81	\$2.81	\$3.17

A standardized hl of milk contains 3.60 kg/hl BF, 3.23 kg/hl PT and 5.69 kg/hl LOS

# SNF Policy



# SNF/BF: Avg Ratios

Month	Dec	Jan	Feb	Mar	Apr	May	Jun	Jul	Aug	Sep	Oct	Nov
< 2			1.93	1.93	1.93	1.92	1.90	1.93	1.93	1.92	1.91	1.92
2 < > 2.3			2.14	2.13	2.14	2.16	2.18	2.18	2.17	2.17	2.14	2.14
> 2.3			2.43	2.35	2.33	2.36	2.35	2.38	2.36	2.36	2.34	2.31
Provincial			2.13	2.12	2.14	2.15	2.19	2.19	2.17	2.15	2.12	2.10