

**Dairy Farmers of New Brunswick**  
**Milk Matters: Production and Payment Summary Report for December 2021**

**Quota Exchange for January, 2022**

Price in Dollars	# of Sellers	Kgs Offered By Sellers	Total Cum. kgs	Difference Between Sellers/Buyers	Total Cum. kgs	Kgs Wanted By Buyers	# of Buyers
\$20,000.00		.0	.0	776.6	776.6	1.0	
QESP \$24,000.00		2.0	2.0	773.6	775.6	775.6	
<b>TOTALS</b>	<b>1</b>	<b>2.0</b>				<b>776.6</b>	<b>28</b>

QESP = Quota Exchange Selling Price

QESP = Le prix de vente de quota

2.0 of 775.6 kgs wanted at or above the Quota Exchange Selling Price of \$24,000.00 were purchased.

2.0 des 775.6 kilos demandé au prix de vente de \$24,000.00 ou au dessus ont été acheté.

There was a total of 2.0 kgs offered for sale and total bids to purchase of 776.6 kgs.

Il y avait un total de 2.0 kgs proposés à la vente et le total des offres pour l'achat de 776.6kg.

**Next Exchange closes at 4:00 p.m., Friday April 1, 2022**

**Results are available Monday April 4, 2022**

Month	Jan	Dec	Nov	Oct	Sept	Aug	6 month avg.
Clearing Price	\$24,000	\$24,000	\$24,000	\$24,000	\$24,000	\$24,000	\$24,000
Kgs on Exchange	2.0	25.5	3.0	53.1	8.5	33.0	20.9
Kgs by Transfer	.0	.0	12.4	.0	.0	.0	2.1

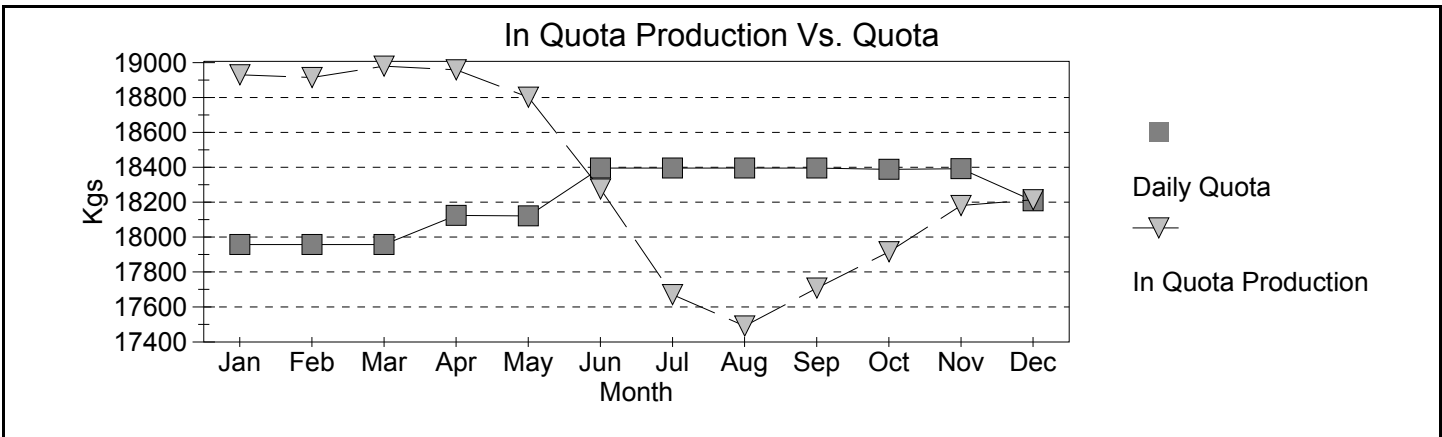
**NB Domestic Milk Pool**

Over Quota	BF Kg	BF \$/kg	BF \$	PT Kg	PT \$/kg	PT \$	OS Kg	OS \$/kg	OS \$
December 2021	0	\$ .0000	\$0	0	\$ .0000	\$0	0	\$ .0000	\$0
12 Months	7,851	-\$ .5044	(\$3,960)	6,123	-\$ .3585	(\$2,195)	10,766	-\$ .0737	(\$794)
<b>SNF &gt;2.3</b>									
December 2021				185	\$ .0000	\$0	329	\$ .0000	\$0
12 Months				6,739	\$ .0000	\$0	12,338	\$ .0000	\$0
<b>SNF 2.0&lt;&gt;2.3</b>									
December 2021				25,966	\$3.4412	\$89,355	46,085	\$3.4412	\$158,587
12 Months				317,698	\$2.6011	\$826,349	577,535	\$2.5975	\$1,500,139
<b>Domestic Market</b>									
December 2021	564,548	\$11.1403	\$6,289,232	408,655	\$9.7012	\$3,964,440	713,451	\$ .9000	\$642,106
12 Months	6,682,166	\$10.8927	\$72,786,509	4,801,765	\$9.7197	\$46,671,706	8,589,553	\$ .9668	\$8,304,089

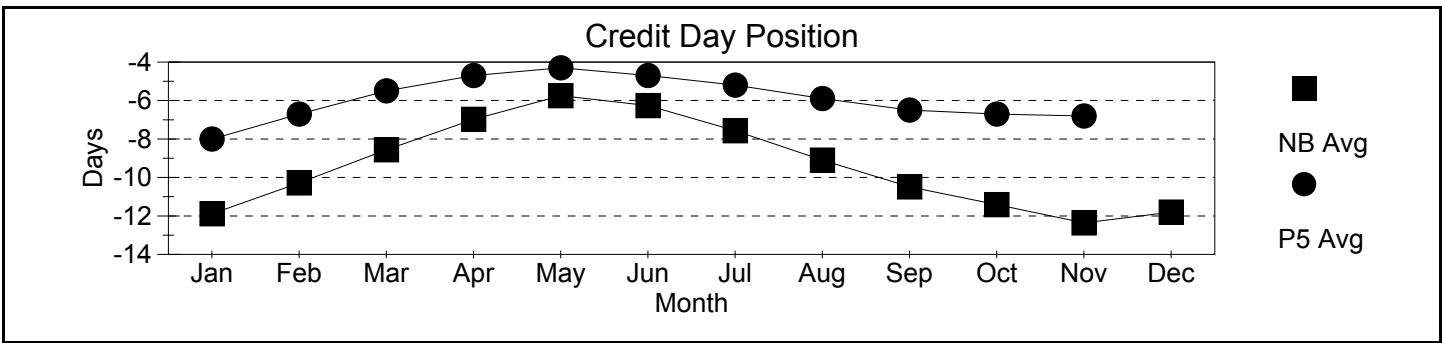
## Production & Payment

Revenue	\$/HL	BF \$	PT \$	OS \$				Total Paid \$
December 2021	\$85.22	\$6,289,232	\$4,053,795	\$800,694				\$11,143,721
12 Months	\$82.58	\$72,796,432	\$47,495,860	\$9,803,434				\$130,095,726
Deductions	Transport	Promotion	Admin	Lab Fee	Research Levy	Total Ded Per HL		Total Deductions
	Per HL	Per Kg of Total Solids						
December 2021	\$2.88	\$ .1139	\$ .0570	\$ .0100	\$0.00	\$5.34		\$697,646
12 Months	\$2.84	\$ .1139	\$ .0608	\$ .0080	\$0.00	\$5.28		\$8,354,551
Quality	Somatic Cell Count	Standard Plate Count	Lab Past. Count					Rejected Loads
December 2021	163,072	5,866	120					0
12 Months	177,178	6,285	154					0
Production & Component Tests	Production Volume	Butter Fat	Protein	Lactose & O.S.	Total solids	SNF Ratio		
December 2021	13,075,978	4.3174	3.3252	5.8112	13.4538	2.1162		
12 Months	157,722,880	4.2416	3.2540	5.8268	13.3224	2.1409		

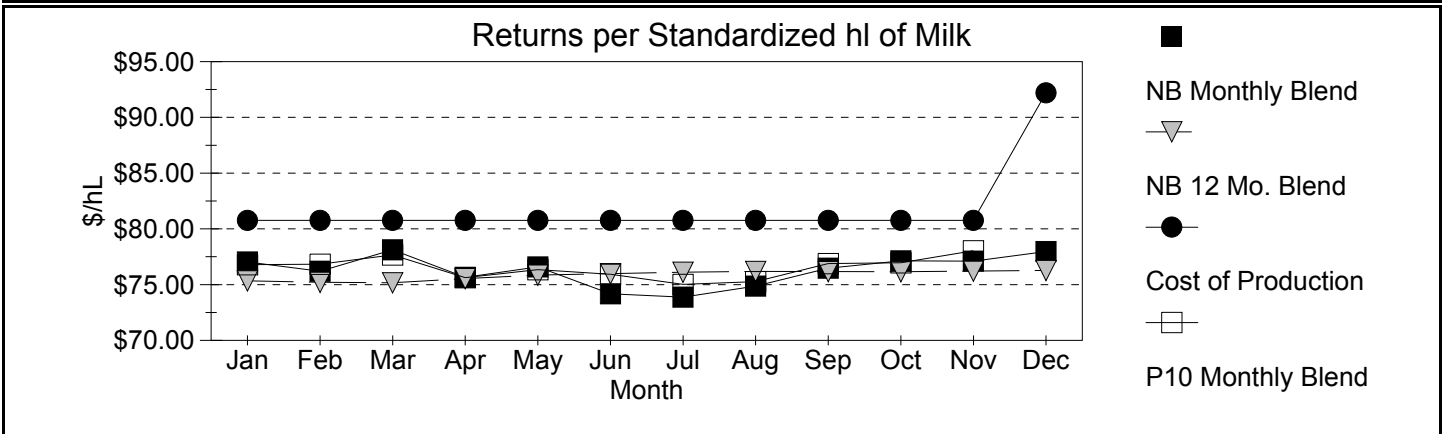
**Milk Matters: Production and Payment Summary Report for December 2021**



**Credits**



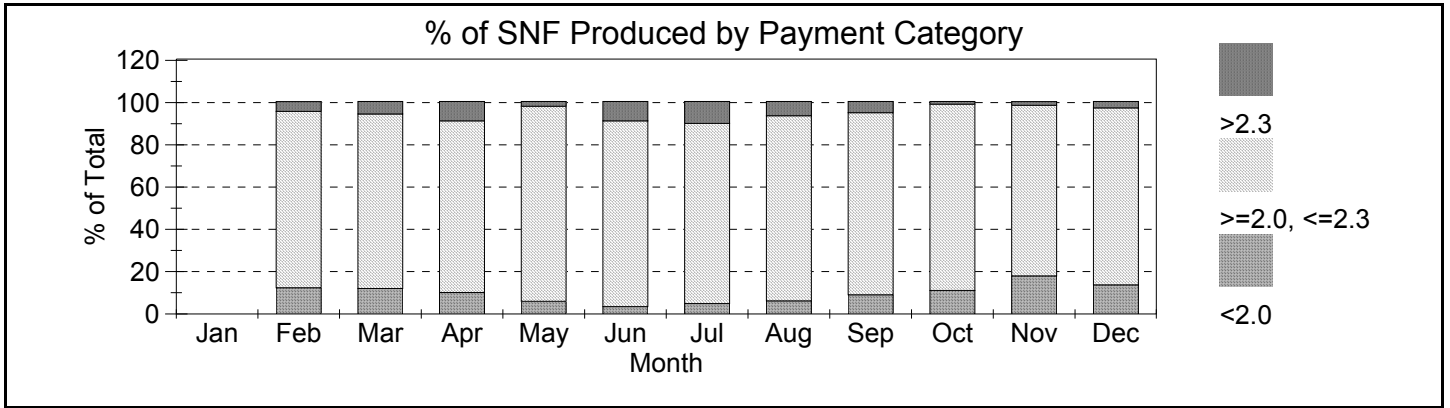
Month	Jan	Feb	Mar	Apr	May	Jun	Jul	Aug	Sep	Oct	Nov	Dec
Incentive Days Issued	0.00	0.00	0.00	0.00	0.00	1.00	1.00	1.00	2.00	1.00	2.00	0.00
Incentive Days Used	0.00	0.00	0.00	0.00	0.00	0.46	0.33	0.32	0.60	0.44	0.93	0.00
Days Over Quota	0.04	0.09	0.08	0.05	0.04	0.04	0.02	0.02	0.00	0.05	0.01	0.00
Days Lost	-0.17	-0.15	-0.11	-0.08	-0.04	-0.10	-0.20	-0.28	-0.29	-0.36	-0.39	-0.31
Days Exchanged	0.99	0.90	1.02	1.06	0.83	0.53	0.55	0.80	1.04	0.90	1.14	0.77
Credit Exch Clearing Price	\$6.04	\$8.58	\$10.00	\$10.00	\$10.00	\$4.55	\$3.01	\$5.01	\$4.75	\$3.99	\$4.00	\$3.75



Month	Jan	Feb	Mar	Apr	May	Jun	Jul	Aug	Sep	Oct	Nov	Dec
SNF 2.00-2.30 \$/kg		\$2.20	\$2.17	\$2.30	\$2.39	\$2.50	\$2.55	\$2.60	\$2.81	\$2.81	\$3.17	\$3.44

A standardized hl of milk contains 3.60 kg/hl BF, 3.23 kg/hl PT and 5.69 kg/hl LOS

# SNF Policy



# SNF/BF: Avg Ratios

Month	Jan	Feb	Mar	Apr	May	Jun	Jul	Aug	Sep	Oct	Nov	Dec
< 2		1.93	1.93	1.93	1.92	1.90	1.93	1.93	1.92	1.91	1.92	1.91
2 < > 2.3		2.14	2.13	2.14	2.16	2.18	2.18	2.17	2.17	2.14	2.14	2.14
> 2.3		2.43	2.35	2.33	2.36	2.35	2.38	2.36	2.36	2.34	2.31	2.33
Provincial		2.13	2.12	2.14	2.15	2.19	2.19	2.17	2.15	2.12	2.10	2.12